

# education

## program guide

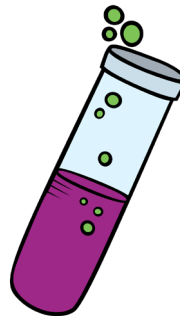


★ FIELD TRIPS

★ OUTREACHES

★ FESTIVAL FUN  
BOOTHS

★ MUSEUM  
IN A BOX



OMAHA  
**children's**  
MUSEUM

# field trips



## \$ COST

**\$9/student** for field trip only

**\$12/student** for field trip with a Learning Lab

## GROUP SIZE

**12 - 85 students**

*If actual attendance is less than the minimum, your group will be charged for 12 paid admissions.*

## GRADES

**Pre K - 5th Grade**

## TIME

**2 hours**

*Ask for information about extending play time.*

## description

Students can explore the museum and any special exhibit with classmates and chaperones. This field trip is great for early childhood groups, preschool, kindergarten or lower elementary grades. Play and enjoy the museum with your group.

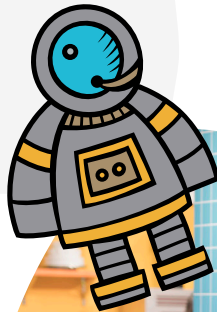
## chaperones

One chaperone must attend with every 6 students. For preschool-age children, one chaperone must attend for every 4 students. All required chaperones will attend free of charge.

*Only chaperones within the 6:1 ratio are complimentary; any amount over the required ratio will have to pay admission fees.*

## availability

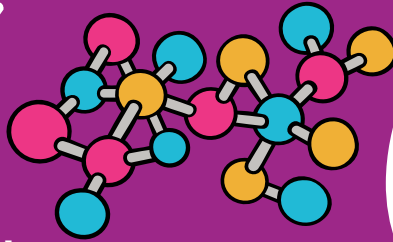
Available as early as 9:30 a.m.! Go to [ocm.org](http://ocm.org) for current hours, or call for availability. Field trips must be booked in advance.





# LEARNING LABS

A Learning Lab is a 45-minute hands-on guided workshop for groups of 30 students or less, that is a part of your 2-hour play time in the museum.



If your organization is bringing three or more groups, additional time will be required at an additional expense.

**CHOOSE FROM THE FOLLOWING LEARNING LABS:**



## ROCKS AND FOSSILS

Be a geologist! Be a paleontologist! Find out what these scientists have in common and the tools they use. Investigate different kinds of rocks, observe real fossils, and learn how they were formed. Then, find your own fossils and rocks in our sluice. It's a rockin' good time!

NE State Standards: SC.K.7, SC.2.13, SC.2.7, SC.3.7.2.B, SC.4.6, SC.4.13.4. IA – 2-ESS2, 3-LS4-1, 4-ESS1, 4-ESS2



## WEATHER WIZARDS

Explore the phenomena of weather! Use the scientific method to investigate clouds, thunder, and lightning. This lesson will blow you away!

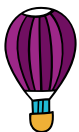
NE State Standards: SC.K.12, SC.1.11, SC.2.13, SC.3.12, SC.5.13. IA – K-ESS2, K-ESS3-2, 3-ESS3, 5-ESS2



## WACKY PLANTS

Discover the world of plants. Dissect a bean seed and plant a garden. Find out about some of the weird, wild, and wacky plants that grow on earth. There's plenty to DIG about this lab!

NE State Standards: SC.K.7, SC.1.6.2, SC.2.7, SC.3.7, SC.3.9. IA – K-LS1, K-ESS3, 1-LS1, 1-LS3, 2-LS4, 5-LS1



## FUN-DAMENTALS OF FLIGHT

It's a bird; it's a plane; it's... the FUN-damentals of Flight! Experiment with the four forces of flight: lift, gravity, thrust and drag. Use the engineering design process to make your own flying invention and test it in the wind tunnel.

NE State Standards: SC.K.1, SC.2.3, SC.3.1. IA – K-PS2, K-2-ETS1, 3-PS2, 4-PS3, 3-5-ETS1



## BUBBLE-LOGY

Explore the science of bubbles! Use the scientific method and investigate different liquids in order to make the best bubble solution in this POP-ular lab!

NE State Standards: This program indirectly hits many standards in all grade levels by being an introduction to how to conduct scientific introduction. Specific NE Standards: SC.K.12.3E, SC.2.3.1, SC.5.3. IA – K-2-ETS 1, 3-5-ETS 1

# outreach programs

## HANDS-ON LEARNING PROGRAM

*In-Person*

### \$ COST

**\$200** for first show

**\$50** for each addition  
of the same show

### GROUP SIZE

Up to **30 students**

### GRADES

Preschool – 5th Grade

### TIME

35-45 minutes

## description

Outreach programs bring the museum to you. Enjoy these programs which include science demonstrations, engaging experiments, and opportunities for student involvement.

## availability

7 days a week, check our website for updated new programs.



### ROCKS AND FOSSILS K-5TH

Be a geologist! Be a paleontologist! Find out what these scientists have in common and the tools they use. Learn how different rocks were formed, observe some real fossils, and make your own.

NE State Standards: SC.K.7, SC.2.13, SC.2.7, SC.3.7.2.B, SC.4.6, SC.4.13.4  
Iowa State Standards: 2-ESS2, 3-LS4-1, 4-ESS1, 4-ESS2



### BUBBLE-OLGY K-5TH

Learn the scientific method while students practice making observations, creating hypotheses, and testing ideas to discover what mystery liquids can make a bubble.

NE State Standards: This program indirectly hits many standards in all grade levels by being an introduction to how to conduct scientific introduction. Specific NE Standards: SC.K.12.3E, SC.2.3.1, SC.5.3  
Iowa State Standards: K-2-ETS 1, 3-5-ETS 1



### ENGINEERING WITH THE THREE LITTLE PIGS PRE K-2ND

Meet the three most famous engineers in storybook history. Have a blast acting out the classic tale. Work in teams to enhance your engineering skills as you build a house strong enough to withstand the huff and puff of the Big Bad Wolf.

NE State Standards: SC.K.1, SC.2.3  
Early Learning Guidelines: S.01, S.02  
Iowa State Standards: K-2-ETS 1,



### DIGGING DINO'S PRE K-2ND

Be a paleontologist and learn about dinosaurs and fossils in this program! Read a story, dig for fossils, play dinosaur games, and create your own fossils in this interactive program that is sure to be Dino-mite!

NE State Standards: SC.K.7, SC.1.6.2.B, SC.2.7  
Early Learning Guidelines: S. 01, S.02  
Iowa State Standards: K-LS1, 1-LS1, 2-LS4



# SCIENCE SHOW PRESENTATIONS *In-Person*

## \$ COST

**\$249** for first show

**\$100** for each addition of the same show

## GROUP SIZE

Up to **300** students

## GRADES

Preschool - 5th Grade

## TIME

**35-45** minutes

*OCM Educators will need 30 minutes before and after the presentation for set-up and clean-up time.*



## SPACE: IT'S OUT OF THE THIS WORLD

Become a Space Cadet and join us as we tour our solar system and learn important physics, chemistry, and engineering concepts. Blast off with a combustion reaction, find out what happens when there is no air pressure, and watch as we make our own version of a comet!

Science Standards: NE - SC.K.1, SC.K.12, SC.1.11, SC.2.13, SC.5.11.

IA - K-PS2, 1-ESS1-1, 5-ESS1 • Mathematics: TS Gold - 20.c.6-8; 21.b.4-6; 22.4-6 • Language: TS Gold - 9.d.6-8 • Cognitive: TS Gold - 11.a.6-8; 11.d.6-8; 12.b.6-8; 14.a.6-8



## THE AMAZING BUBBLE SHOW

Experience Omaha Children's Museum's most POP-ular program. Discover new tools to create bubbles, turn bubbles into smoke and even make bubbles big enough for a person to stand in.

Science Standards: NE - SC.K.1, SC.1.6, SC.2.3, SC.4.6, SC.5.3.

IA - K-PS2, 2-PS1, 4-PS4, K-2-ETS1 • Math/Mathematics: Nebraska - MA 0.1.1; MA 0.3.1; MA 1.1.1; MA 1.3.1; MA 2.1.1; MA 2.3.1; MA 3.1.1; MA 3.3.1 / Iowa - K.CC; K.OA; K.MD; K.G.1.OA; 1.G / TS Gold - 21.b.4-6 • Language: TS Gold - 9.d.6-8 • Cognitive: TS Gold - 11.a.6-8; 11.c.6-8; 11.d.6-8 • English Language Acquisition: TS Gold - 37.6-8, 38.6-8



## MOLECULAR MAYHEM

This outreach will explore what happens to molecules when they are put to the test! Watch liquids become solids, soap become fluffy, and chip bags shrink in the show all about molecules and chemical reactions!

Science Standards: NE - SC.K.1, SC.1.2, SC.2.3, SC.4.2, SC.4.4, SC.5.3.

IA - K-PS2, 1-PS4, 2-PS1, 4-PS3, 5-PS1 • Mathematics: TS Gold - 22.4-6 • Language: TS Gold - 8.a.6-8 • Cognitive: TS Gold - 11.a.6-8;



## SEASONAL SPECIALTIES



SEPTEMBER - DECEMBER

### PETE'S GROOVY SCIENCE SHOW

Come along as we walk in Pete the Cat's white shoes and do some experimenting along the way! We will investigate the properties of color and have some groovy fun.



FEBRUARY - MAY

### SEUSS-SATIONAL SCIENCE SHOW

Meet the museum's resident "Seussical Scientist" as we bring Dr. Seuss' classics to life with experiments and silliness inspired by the legendary books! This larger than life program bridges literacy and STEM learning in a fun and engaging way!

### Seasonal Specialties Educational Standards

Science Standards: NE - SC.K.1; SC.1.11; SC.1.2; SC.2.13; SC.2.3.

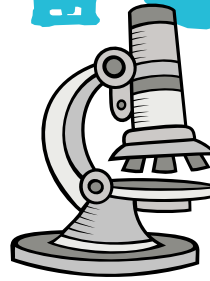
IA - K-PS2; 1-PS4-2; 1-PS4-3, 2-PS1; 1-ESS1-1; 1-ESS-1 • Mathematics: TS Gold - 21.b.4-6 • Language Arts/Literacy: NE - LA 0.1.1; LA 0.1.2; LA 0.1.5; LA 0.3; LA 1.1.1; LA 1.1.2; LA 1.1.5; LA 1.3.2; LA 2.1.1; LA 2.1.2; LA 2.1.5; LA 2.3.2. IA - DOK1; DOK2 / TS Gold - 8.a.6-8; 17.a.6-8; 18.a.6-8; 18.c.6-8 • Cognitive: TS Gold - 11.a.6-8; 11.c.6-8; 11.d.6-8; 12.b.6-8; 13.6-8 • English Language Acquisition: TS Gold - 37.6-8



# Need to know



All prices and programs are subject to change. Programs subject to availability.



## contact and booking

To book your visit or outreach, please contact the Group Sales Manager at **(402) 930-2340** or **groups@ocm.org**. Please schedule at least two weeks prior to your program or admission. For the best choice of day and time, please schedule early.

## booking times

### Field Trips

Available as early as 9:30 a.m. Go to [ocm.org](http://ocm.org) for current hours, or call for availability. Learning Labs are not available during the summer (June - August).



### Outreaches

All outreaches are available 7 days a week.

## fees and payment

Program fees are listed throughout this guide and are effective through **May 31, 2024**. Payment is required on the day of the field trip unless other arrangements have been made. Please make all checks payable to Omaha Children's Museum. For outreaches, presenter cannot take payment on the day of event. If not paid in advance, you will be billed.



## cancellation policy

Contact the museum at least two weeks in advance to cancel your trip. Cancelled trips without two weeks notice will be charged a **\$50 cancellation fee**. Groups may not book trips again until this fee is paid.

## age requirements

The experiments and activities in our outreach programs are appropriate for Preschool through 5th grade. See specific programs for more details and suggested age range.

## mileage charges for outreaches

Free within 25 miles of the museum. \$2 per round trip mile, beyond 25 miles of the museum.

## eating accommodations

Please plan accordingly and communicate with the Group Sales Manager if your group intends to eat lunch at the museum. We have limited space available for large group eating accommodations. An outdoor public eating area is available on a first come, first serve basis. Indoor lunch rooms are available to reserve at time of booking for **\$50 per group**. All lunch rooms are subject to availability.



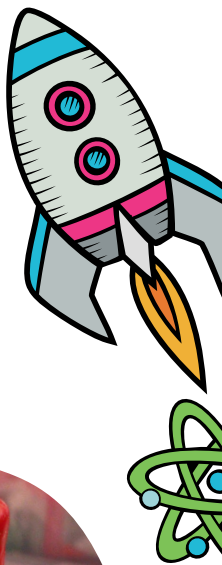
## FESTIVAL FUN BOOTH

Have OCM set up at your next event with a Discovery Booth! Pick from STEM activities, crafts, bubbles, and more. These are fun, interactive experiences your participants are sure to enjoy!

**\$250** for first hour

**\$100** for each additional hour

**\$115** for each additional activity



## MUSEUM IN A BOX

Looking for an educational, interactive learning experience to share with your students? Why not rent Museum in a Box! This portable kit will include hands-on materials, lesson plans, and activities for an entire week of learning through play! For information regarding topics and included materials, contact the Outreach Coordinator at (402) 342-6164 ext. 452, or visit [ocm.org](http://ocm.org).



## 2023 - 2024 Special Exhibits



**Jurassic Nebraska**

May 27, 2023 - January 7, 2024



**Cobweb Castle**

September 30 - October 31, 2023



**Santa's Magic**

November 24 - December 23, 2023



**Ocean Bound**

January 20 - May 24, 2024



**Millions of Miles**

February 3 - April 14, 2024



**Kenya's Kids**

June 8 - September 1, 2024





ocm.org

